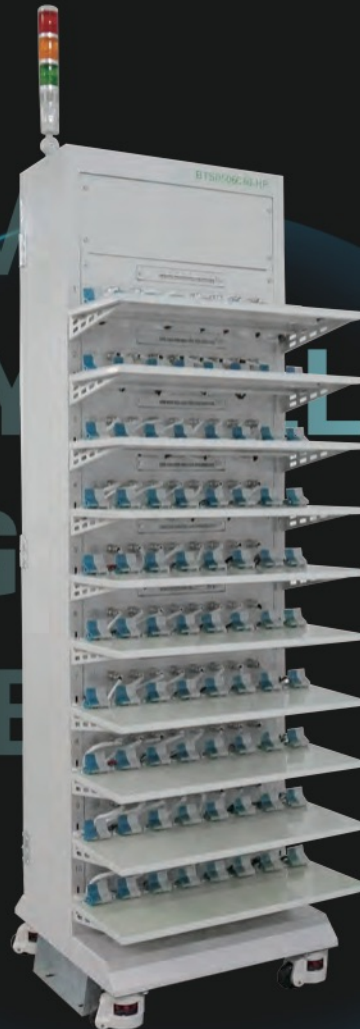


# CONSUMER BATTERY CELL TESTING EQUIPMENT SERIES



## Overview

Sinexcel consumer battery cell testing equipment is an energy feedback testing equipment developed with advanced instrument technology and electricity&electronics technology. It has the characteristics of high precision, high safety, simple and easy to use .It's suitable for product research, product verification and quality control of consumer battery cell testing

## Application scenarios



Battery  
manufacturer



Automobile  
companies



Testing agency



Academic research  
institute



Helon recycling  
enterprises

## Product features

- High precision measurement and output, 0.05%F.S.
- Fast current response, 20ms
- High rate data recording, 100ms
- Discharge energy back to the grid, 60%
- Automatic switch of multi-current gear
- Multi-layer hardware and software security protection, 100+ protection items
- Integrated inspection, incubator, linkage and monitoring
- Customize templates to generate data reports

## Product parameters

	Equipment model	BTS-5V6A80CH
Input parameters	Input voltage	220Vac±10%
	Input frequency	50Hz±5Hz
Output parameters	Output voltage range	Charge : 0V ~ 5V;discharge : 2V ~ 5V
	Voltage accuracy	±0.05%F.S. @25±5°C
	Output current range	Charge and discharge : 0.3mA~6A
	Current accuracy/automatic grading	Gear 1 : 0.3mA~ 300mA , ±(0.05%F.S.+0.05%R.D.) @25±5°C
		Gear 2 : 300mA~6A , ±(0.05%F.S.+0.05%R.D.) @25±5°C
	Charge and discharge response time	≤20ms
Charge-discharge switch time	≤50ms	
Function	Charge-discharge mode	CC,CV,CP,pulse,work condition simulation,DCIR etc.
	Cut-off/protection condition	Voltage, current, time, temperature, capacity, expression function, etc
	Record interval	100ms/0.1mV/0.1mA
	Linkage	Incubator, water cooler, auxiliary voltage, auxiliary temperature,auxiliary pressure, etc
	Protection	Resume from break-point , battery reverse connection, battery under voltage, cross line protection,voltage fluctuation protection,etc
Work condition	Working temperature	0°C~45°C
	Humidity	< 85%RH
	Altitude	≤2000m
Basic parameters	Size	650*610*1900mm(W*D*H)

## Standard model

- BTS-5V12A80CH
- BTS-5V6A80CH
- BTS-5V1A80CH
- BTS-5V200mA80CH

# POWER BATTERY CELL TESTING EQUIPMENT SERIES



## Overview

Sinexcel power battery cell testing equipment is an energy feedback testing equipment developed with advanced instrument technology and electricity&electronics technology. It has the characteristics of high precision, high safety, simple and easy to use and quick response. It's suitable for product research, product verification and quality control of power battery cell.

## Application scenarios



Battery  
manufacturer



Automobile  
companies



Testing agency



Academic research  
institute



Helon recycling  
enterprises



## Product features

- Ultra-high precision:0.05%F.S.
- Quick response:5ms
- High effective feedback:80%
- Multiple current gears automatic switch
- Powerful working condition simulation:20ms/300W+
- Integrated inspection, incubator, water cooler, etc.to achieve linkage and monitoring
- Customize templates to generate data reports
- Multi-layer hardware and software security protection, 100+ protection items

## Product parameters

	Equipment model	BTS-5V500A8CH
Input parameters	Input voltage	400Vac±10%
	Input frequency	50Hz±5Hz
Output parameters	Output voltage range	Charge: 0V~5V;discharge: 1.5V~5V(Discharge voltage 0V can be customized)
	Voltage accuracy	±0.05%F.S. @25±5℃
	Output current range	Charge and discharge : 0.05A~500A
	Current accuracy/automatic grading	Gear 1: 0.05A~50A , ±0.05%F.S. @25±5℃
		Gear 2: 50A~100A , ±0.05%F.S. @25±5℃
		Gear 3: 100A~200A , ±0.05%F.S. @25±5℃
Gear 4: 200A~500A , ±0.05%F.S. @25±5℃		
Charge and discharge response time	≤5ms	
Charge-discharge switch time	≤10ms	
Function	Charge-discharge mode	CC,CV,CP,pulse,work condition simulation,DCIR etc.
	Cut-off/protection condition	Voltage,current,time, temperature, capacity, expression function, etc
	Record interval	10ms/0.1mV/0.1mA
	Linkage	Incubator,water cooler,auxiliary voltage,auxiliary temperature,auxiliary pressure,ripple wave,etc
	Protection	Resume from break-point , Battery reverse connection,battery undervoltage,cross line protection,voltage fluctuation protection,etc
Work condition	Working temperature	0℃~45℃
	Humidity	< 85%RH
	Altitude	≤2000m
Basic parameters	Size	600*600*1800mm (W*D*H)

## Standard model

- BTS-5V1000A4CH
- BTS-5V500A8CH
- BTS-5V300A12CH
- BTS-5V200A16CH
- BTS-5V100A32CH
- BTS-5V60A48CH

## Application case



# BATTERY MODULE TESTING EQUIPMENT 60V SERIES



## Overview

Sinexcel battery module testing equipment is an energy feedback testing equipment developed with advanced instrument technology and electricity&electronics technology. It has the characteristics of high precision, high safety, simple and easy to use and quick response. It's suitable for product research, product verification and quality control of battery module

## Application scenarios



Battery  
manufacturer



Automobile  
companies



Testing agency



Academic research  
institute



Helon recycling  
enterprises

## Product features

- Ultra-high precision:0.05%F.S.
- Quick response:5ms
- High effective feedback:85%
- Multiple current gears automatic switch
- Powerful working condition simulation:50ms/300W+
- Integrated inspection, incubator, water cooler,BMS etc. to achieve linkage and monitoring
- Customize templates to generate data reports
- Multi-layer hardware and software security protection, 100+ protection items

## Product parameters

	Equipment model	BTS-60V300A2CH
Input parameters	Input voltage	400Vac±10%
	Input frequency	50Hz±5Hz
	Output voltage range	Charge and discharge : 5V ~ 60V
Output parameters	Voltage accuracy	±0.05%F.S. @25±5°C
	Output current range	Charge and discharge: 0.1A~300A
	Current accuracy/automatic grading	Gear 1 : 0.1A~100A , ±0.05%F.S.@25±5°C
		Gear 2 : 100A~200A , ±0.05%F.S.@25±5°C
		Gear 3 : 200A~300A. , ±0.05%F.S.@25±5°C
	Charge and discharge response time	≤5ms
Charge-discharge switch time	≤10ms	
Function	Charge-discharge mode	CC,CV,CP,pulse,work condition simulation,DCIR etc.
	Cut-off/protection condition	Voltage, current, time, temperature, capacity, expression function, etc
	Record interval	10ms/0.1mV/0.1mA
	Linkage	Incubator, water cooler, auxiliary voltage, auxiliary temperature, BMS, etc
	Protection	Resume from break-point , Battery reverse connection,battery under voltage,voltage fluctuation protection,loop impedance protection,etc
Work condition	Working temperature	0°C~45°C
	Humidity	< 85%RH
	Altitude	≤2000m
Basic parameters	Size	600*800*1800mm (W*D*H)

## Standard model

- BTS-60V300A2CH
- BTS-60V200A4CH
- BTS-60V100A8CH
- BTS-60V50A12CH

## Application case





# BATTERY MODULE TESTING EQUIPMENT 120V SERIES



## Overview

Sinexcel battery module testing equipment is an energy feedback testing equipment developed with advanced instrument technology and electricity&electronics technology. It has the characteristics of high precision, high safety, simple and easy to use and quick response. It's suitable for product research, product verification and quality control of battery module

## Application scenarios



Battery  
manufacturer



Automobile  
companies



Testing agency



Academic research  
institute



Helon recycling  
enterprises

## Product features

- Ultra-high precision:0.05%F.S.
- Quick response:5ms
- High effective feedback:90%
- Multiple current gears automatic switch
- Powerful working condition simulation:50ms/300W+
- Integrated inspection, incubator, water cooler,BMS etc. to achieve linkage and monitoring
- Customize templates to generate data reports
- Multi-layer hardware and software security protection, 100+ protection items

## Product parameters

	Equipment model	BTS-120V500A2CH
Input parameters	Input voltage	400Vac±10%
	Input frequency	50Hz±5Hz
Output parameters	Output voltage range	Charge and discharge: 5V~120V(Discharge voltage 0V can be customized)
	Voltage accuracy	±0.05%F.S. @25±5°C
	Output current range	Charge and discharge : 0.1A~500A
	Current accuracy/automatic grading	Gear 1 : 0.1A~100A , ±0.05%F.S. @25±5°C
		Gear 2 : 100A~200A , ±0.05%F.S. @25±5°C
		Gear 3 : 200A~300A , ±0.05%F.S. @25±5°C
Gear 4 : 300A~500A , ±0.05%F.S.@25±5°C		
Charge and discharge response time	≤5ms	
Charge-discharge switch time	≤10ms	
Function	Charge-discharge mode	CC,CV,CP,pulse,work condition simulation,DCIR etc.
	Cut-off/protection condition	Voltage, current, time, temperature, capacity, expression function, etc
	Record interval	10ms/0.1mV/0.1mA
	Linkage	Incubator, water cooler, auxiliary voltage, auxiliary temperature,BMS, etc
	Protection	Resume from break-point , Battery reverse connection,battery undervoltage,voltage fluctuation protection,loop impedance protection,etc
Work condition	Working temperature	0°C~45°C
	Humidity	< 85%RH
	Altitude	≤2000m
Basic parameters	Size	800*800*2000mm (W*D*H)

## Standard model

- BTS-120V500A2CH
- BTS-120V300A2CH
- BTS-120V200A4CH
- BTS-120V100A10CH
- BTS-120V50A20CH

## Application case





# BATTERY PACK TESTING EQUIPMENT 750V SERIES



## Overview

Sinexcel battery PACK testing equipment is an energy feedback testing equipment developed with advanced instrument technology and electricity&electronics technology. It has the characteristics of high precision, high safety, simple and easy to use and quick response. It's suitable for product research, product verification and quality control of battery PACK

## Application scenarios



Battery  
manufacturer



Automobile  
companies



Testing agency



Academic research  
institute



Helon recycling  
enterprises

## Product features

- Ultra-high precision:0.05%F.S.
- Quick response:5ms
- High effective feedback:93%
- Multiple current gears automatic switch
- Powerful working condition simulation:50ms/300W+
- Integrated inspection, incubator, water cooler,BMS etc. to achieve linkage and monitoring
- Customize templates to generate data reports
- Multi-layer hardware and software security protection, 100+ protection items

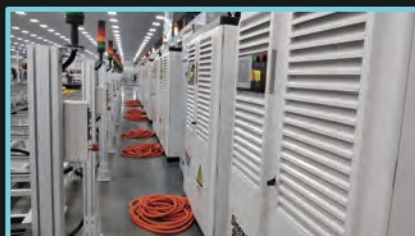
## Product parameters

	Equipment model	BTS-750V500A2CH-350KW
Input parameters	Input voltage	400Vac±10%
	Input frequency	50Hz±5Hz
	Output voltage range	Charge and discharge : 30V ~ 750V ( Discharge voltage 5V can be customized )
Output parameters	Voltage accuracy	±0.05%F.S. @25± 5°C
	Output current range	Charge and discharge : 0.1A~500A
	Current accuracy/automatic grading	Gear 1 : 0.1A~100A , ±0.05%F.S.@25±5°C
		Gear 2 : 100A~200A , ±0.05%F.S.@25±5°C
		Gear 3 : 200A~300A , ±0.05%F.S.@25±5°C
		Gear 4 : 300A~500A , ±0.05%F.S.@25± 5°C
	Rated power	Max 350kW, supporting reduction/free distribution
	Charge and discharge response time	≤5ms
Charge-discharge switch time	≤10ms	
Function	Charge-discharge mode	CC,CV,CP,pulse,work condition simulation,DCIR etc.
	Cut-off/protection condition	Voltage, current, time, temperature, capacity, expression function, etc
	Record interval	10ms/0.1mV/0.1mA
	Linkage	Incubator, water cooler, auxiliary voltage, auxiliary temperature, BMS, etc
	Protection	Resume from break-point , Battery reverse connection,batter yunder voltage,voltage fluctuation protection,loop impedance protection,etc
Work condition	Working temperature	0°C~45°C
	Humidity	< 85%RH
	Altitude	≤2000m
Basic parameters	Size	2300*850*2000mm (W*D*H)(subject to available products)

## Standard model

- BTS-750V500A2CH -350kW
- BTS-750V300A2CH -300kW
- BTS-750V200A4CH -300kW
- BTS-750V100A8CH -300kW

## Application case





# BATTERY PACK TESTING EQUIPMENT 1000V SERIES



## Overview

Sinexcel battery PACK testing equipment is an energy feedback testing equipment developed with advanced instrument technology and electricity&electronics technology. It has the characteristics of high precision, high safety, simple and easy to use and quick response. It's suitable for product research, product verification and quality control of battery PACK and energy storage battery.

## Application scenarios



Battery  
manufacturer



Automobile  
companies



Testing agency



Academic research  
institute



Helon recycling  
enterprises



## Product features

- Ultra-high precision:0.05%F.S.
- Quick response:5ms
- High effective feedback:95%
- Multiple current gears Automatic switch
- Powerful working condition simulation:50ms/300W+
- Integrated inspection, incubator, water cooler,BMS etc. to achieve linkage and monitoring
- Customize templates to generate data reports
- Multi-layer hardware and software security protection, 100+ protection items

## Product parameters

	Equipment model	BTS-1000V500A2CH-450KW
Input parameters	Input voltage	400Vac±10%
	Input frequency	50Hz±5Hz
Output parameters	Output voltage range	Charge and discharge : 50V ~ 1000V ( Discharge voltage 5V can be customized )
	Voltage accuracy	±0.05%F.S. @25±5°C
	Output current range	Charge and discharge : 0.1A~500A
	Current accuracy/automatic grading	Gear 1 : 0.1A~100A , ±0.05%F.S. @25±5°C
		Gear 2 : 100A~200A , ±0.05%F.S. @25±5°C
		Gear 3 : 200A~300A , ±0.05%F.S. @25±5°C
		Gear 4 : 300A~500A , ±0.05%F.S. @25±5°C
	Rated power	Max 450kW, supporting reduction/free distribution
Charge and discharge response time	≤5ms	
Charge-discharge switch time	≤10ms	
Function	Charge-discharge mode	CC,CV,CP,pulse,work condition simulation,DCIR etc.
	Cut-off/protection condition	Voltage, current, time, temperature, capacity, expression function, etc
	Record interval	10ms/0.1mV/0.1mA
	Linkage	Incubator, water cooler, auxiliary voltage, auxiliary temperature, BMS, etc
	Protection	Resume from break-point , Battery reverse connection,battery under voltage,voltage fluctuation protection,loop impedance protection,etc
Work condition	Working temperature	0°C~45°C
	Humidity	< 85%RH
	Altitude	≤2000m
Basic parameters	Size	3300*1000*2000mm(W*D*H)(subject to available products)

## Standard model

- BTS-1000V500A2CH-450kW
- BTS-1000V400A2CH-400kW
- BTS-1000V300A2CH-300kW
- BTS-1000V200A4CH-400kW

# MULTI-FUNCTION DATA ACQUISITION BOX/INSPECTION SERIES



## Overview

Sinexcel multi-function data acquisition box/patrol inspection is a voltage and temperature acquisition system with high precision, high speed and free configuration for battery/module /PACK testing equipment. Realizing real-time acquisition, recording and monitoring of battery voltage and temperature. With the hardware protection function of independent and direct control of the emergency stop switch of testing equipment, testing is more safe.

## Application scenarios



Battery  
manufacturer



Automobile  
companies



Testing agency



Academic research  
institute



Helon recycling  
enterprises

## Product features

- High precision voltage and temperature acquisition
- High-speed sampling : 10ms
- Double protection of hardware and software, more secure testing
- The voltage and temperature of the inspection box/rack are freely configured
- Multiple inspection boxes/racks are connected in series to expand sampling points
- Sampling channel isolation, withstand voltage 2000V

## Product parameters

Input parameters	Input	20Vac±10% ( Portable inspection box )
		24Vdc ( inspection frame )
	Power consumption	≤75W ( related to the quantity of inspections )
Battery voltage	Voltage acquisition range	-5V~+5V
	Voltage acquisition accuracy	≤±0.05%F.S. @25±5°C ;
	Resolution	0.1mV
	Sampling rate	10ms
Thermocouple (K/T)	Collection range	-60°C to +200°C
	Collection accuracy	±1°C
	Resolution	0.1°C
	Sampling rate	500ms
NTC	Collection range	-40°C to +125°C
	Acquisition accuracy	±1°C
	Resolution	0.1°C
	Sampling rate	500ms
Work condition	Working temperature	0°C~45°C
	Humidity	< 85%RH
	Altitude	≤2000m
Basic parameters	Size	340*158*270 (W*D*H) ( Portable inspection box )
		600*500*1200(W*D*H) ( Inspection frame )



# HIGH PRECISION AUTOMATIC CALIBRATION TOOLING



## Overview

Sinexcel high-precision automatic calibration tooling realizes efficient automatic calibration of one-button&multi-channel voltage and current points of battery detection equipment, and generates customized reports to realize archiving and traceability of calibration

## Application scenarios



Battery  
manufacturer



Automobile  
companies



Testing agency



Academic research  
institute



Helon recycling  
enterprises

## Product features

- Ultra high precision, reference 0.01%F.S. imported instrument, ensuring accurate calibration
- One machine multi-function, covering 0A~500A all current calibration, automatic matching equipment grading
- Highly automated, one-button multi-channel automatic calibration, calibration time per channel < 2mins
- Intelligent reporting, customized voltage & current calibration value, report parameters and qualified standards, automatic report generation, calibration traceability

## Product parameters

Calibration range	Voltage	0V~1000V
	Current	0A~500A
Calibration time	< 2mins/CH	
Multimeter	Agilent	
Shunt	0.01%F.S. HALL or Shunt	
Function	Automatic calibration function	One-key automatic calibration of 8 channels, provide calibration report
	Automatic verification function	One-key automatic verification of 8 channels, provide verification report
	Manual calibration function	Manual selection of any channel any current point, voltage point calibration
	Manual verification function	Manually select any channel any current point, voltage point verification
	Custom report	Custom current point, voltage point, determination standard, automatic calculation of deviation and other information
Work condition	Working temperature	0°C-45°C
	Humidity	< 85%RH
	Altitude	≤ 2000m
Basic parameters	Size	600*600*900mm(W*D*H)

## Application case

The application case displays the software interface for current calibration. The left screenshot shows the main control window with a data table for channel 79.9872A. The right screenshot shows a detailed calibration report for channel 79.98A, including a table of calibration points and a summary table of results.

设备号	通道号	量程	校准点	校准值	校准误差	校准标准	校准日期	校准人	校准设备
10-1	2	500A	1	0.999802	0.9994	-0.0011	-0.0035	-0.1001	-0.5127
10-1	2	500A	10	9.999177	10.0005	0.0018	0.0069	0.0187	0.0043
10-1	2	500A	100	99.9941	99.9950	0.0009	0.0099	0.0045	-0.0013
10-1	2	500A	1000	999.9901	999.9905	0.0004	0.0044	0.0048	-0.0013
10-1	2	500A	250	250.0279	250.04	0.0121	0.0118	0.0044	0.0052
10-1	2	500A	500	499.978	499.98	-0.0012	-0.0012	0.0174	-0.0047
10-1	2	500A	450	449.983	449.98	-0.0013	-0.0027	-0.0029	-0.0026
10-1	2	500A	500	499.991	499.98	-0.0011	-0.0011	0.0006	-0.0014
10-1	2	500A	1	0.999802	0.9994	-0.0011	-0.0035	-0.1001	-0.5127
10-1	2	500A	10	9.999177	10.0005	0.0018	0.0069	0.0187	0.0043
10-1	2	500A	100	99.9941	99.9950	0.0009	0.0099	0.0045	-0.0013
10-1	2	500A	1000	999.9901	999.9905	0.0004	0.0044	0.0048	-0.0013
10-1	2	500A	250	250.0279	250.04	0.0121	0.0118	0.0044	0.0052
10-1	2	500A	500	499.978	499.98	-0.0012	-0.0012	0.0174	-0.0047
10-1	2	500A	450	449.983	449.98	-0.0013	-0.0027	-0.0029	-0.0026
10-1	2	500A	500	499.991	499.98	-0.0011	-0.0011	0.0006	-0.0014
10-1	2	500A	1	0.999802	0.9994	-0.0011	-0.0035	-0.1001	-0.5127
10-1	2	500A	10	9.999177	10.0005	0.0018	0.0069	0.0187	0.0043
10-1	2	500A	100	99.9941	99.9950	0.0009	0.0099	0.0045	-0.0013
10-1	2	500A	1000	999.9901	999.9905	0.0004	0.0044	0.0048	-0.0013
10-1	2	500A	250	250.0279	250.04	0.0121	0.0118	0.0044	0.0052
10-1	2	500A	500	499.978	499.98	-0.0012	-0.0012	0.0174	-0.0047
10-1	2	500A	450	449.983	449.98	-0.0013	-0.0027	-0.0029	-0.0026
10-1	2	500A	500	499.991	499.98	-0.0011	-0.0011	0.0006	-0.0014

# BATTERY FORMATION AND TESTING SOFTWARE

## Product overview

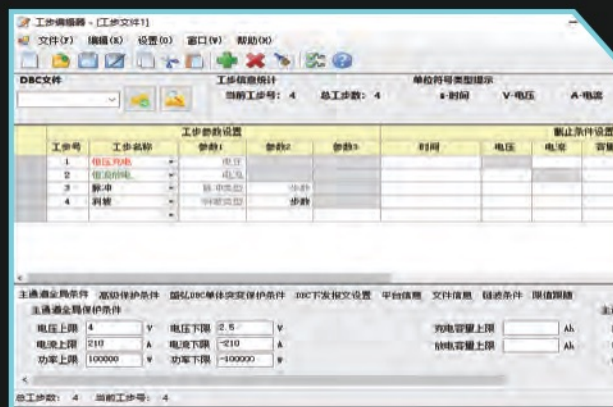
Sinexcel battery formation and testing software is the computer background control system designed for battery testing equipment, mainly including battery test process edit and control, real-time data and state centralized monitoring, battery test data recording analysis and other functions, the graphical interface design meet the requirements of convenient operation and high efficiency test, also have highly stability and security

## Product features

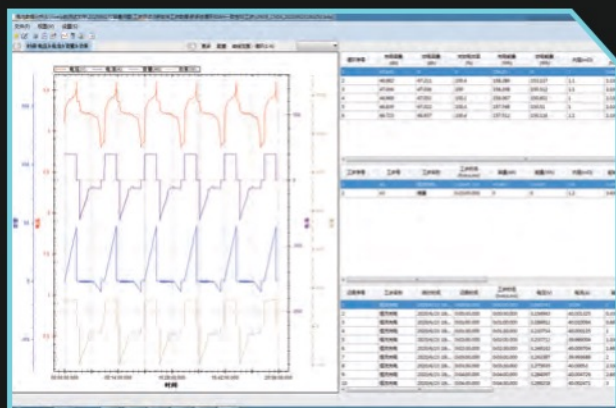
### Intuitive Interface, Convenient Operation



### Fully Functional, Flexible Editing



### Accurate Analysis, Rich Statements



### Complete Protection, Data Security





## Main function

### 1 Process editor

It supports a variety of process types, flexible editing and free combination of working step parameters, cut-off conditions and protection conditions, and supports Excel import working conditions to meet complex test requirements

### 3 Centralized monitoring

The graphical design of the monitoring interface supports personalized configuration, displays the real-time status and data information of multiple channels on multiple devices at the same time, and realizes the centralized management of testing

### 5 Peripheral linkage

Support CAN, CAN\_FD, LIN, 485, WLAN and other communication methods and incubator, water cooler, pressure acquisition, BMS and other external equipment linkage, to form a comprehensive integrated automatic test system

### 7 Compatible extensions

It supports docking with database, MES, laboratory management system and other software, and has the functions of command receiving and execution, test status and data uploading, so as to realize systematic battery testing

### 2 Complete control

Support batch start and stop, independent start and stop, bar code start, reservation pause, reset process and other operations of testing equipment, users fully control the test

### 4 Data analysis

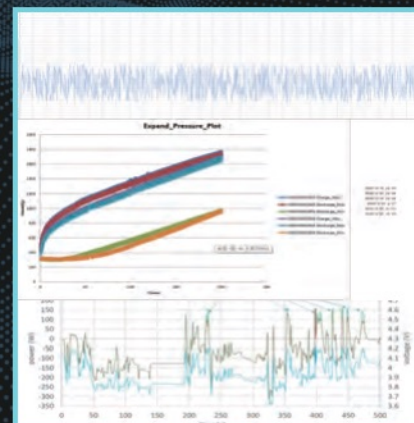
Test data support table and curve mode, can customize the selection of parameters and analysis methods, to achieve rapid and accurate evaluation of battery performance

### 6 Automatic report

According to the test project, the report template can be customized and configured to form a rich template library, and the data report can be generated automatically, greatly improving the report sorting efficiency

### 8 Security protection

It has multi-level user access rights, work step protection, process global protection, power down and double data anti-loss technology and other protection mechanisms to ensure the test process and data security



# LABORATORY INFORMATION MANAGEMENT SYSTEM(LIMS)

## Product overview

Sinexcel LIMS is a highly intelligent, informatization, standardization battery test management software. It implements equipment management, one-key identification and conversion of process flow, intelligent schedule, remote centralized monitoring, automatic data reports, and other functions, can greatly improve the efficiency of lab personnel and equipment, reduce operating costs, helping our clients achieve more efficient, more orderly and much safer battery test



INFORMATIZATION



INTELLIGENT



STANDARDIZATION

## Product features



### Informatization

Summarize the battery testing information of orders, samples, equipment, personnel and other resources to achieve resource quantification and configuration optimization. The testing process is transparent and timely notified



### Intelligent

Intelligent identification of test requirements, automatic calculation of test duration, intelligent matching of test equipment and automatic production scheduling, generation of test plans, improve equipment utilization /OEE;Generate test report intelligently based on custom report template library



### Standardization

Standardize battery testing procedures and exception handling methods to ensure orderly and safe execution of tests



## Main function

### 1 Equipment management

- Different types of equipment from different manufacturers can be connected to manage and schedule the equipment uniformly
- The system can customize the OEE calculation rules, and automatic calculation
- Support equipment operation and maintenance such as equipment log recording, equipment calibration, software and hardware upgrade

### 3 Plan management

- Automatically recommend the optimal test channel according to sample, test process, channel capacity, etc., and make production test plan to maximize equipment utilization
- Support test changes such as queue jumping for emergency tasks, channel change, process change, sample retest and so on, adjust resources in real time

### 5 Test management

- Support one computer to centrally manage all channels across manufacturers and regions, and realize one-to-many remote monitoring
- Push various test status and fault information in a timely and directional manner to improve test efficiency and test safety

### 7 Sample management

- Batteries can be scanned in and out of storage with one click, without paper registration
- Online inquiry of sample specifications, test status, etc. The sample information is watertight

### 2 Process management

- Support 1000+ standard test process one-key identification & conversion
- Automatic process inspection, including working step parameters, cut-off conditions and protection conditions
- Centralized management of process file library for convenience of traceability

### 4 Data management

- The data of different manufacturers are uploaded to the database in accordance with the unified parameter types and formats, which is convenient for data query, export, secondary calculation and traceability
- The system can customize the configuration of the report template, form a rich template library, automatically generate data reports

### 6 Order management

- Support online order application and inquiry, realize the paperless office
- The order is bound to the sample and process, directly and clearly

### 8 Message notice

- Timely notification of order, sample and other test status information to quickly grasp the test progress
- Realize timely processing of work order approval reminders

## Application case

